



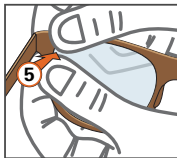
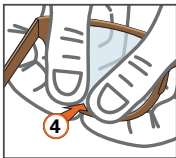
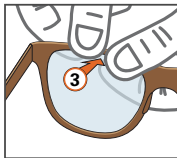
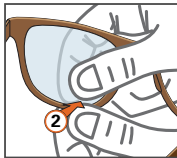
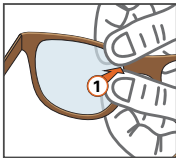
lens fitting protocol

Due to the handcrafted construction and natural wood materials, each individual Flicht frame must be traced prior to fitting the lenses.

Insert lens from the back of the frame starting at the nasal.

- 1-4. Work the lens along the top and bottom of the frame using your thumbs on the back of the lens and fingers as support on the front of the frame until just the hinge corner is left.
5. Using your fingers to support the front of the frame push with both thumbs on the back of the lens at the hinge corner until the lens snaps securely into the groove.

 DO NOT USE HEAT



Instructional video



(269) 267-3061 • fitchframes@gmail.com • fitchframes.com